



# Doctoral Schools

## Babeş-Bolyai University

### Cluj-Napoca



UNIVERSITATEA BABEŞ-BOLYAI  
BABEŞ-BOLYAI TUDOMÁNYEGYETEM  
BABEŞ-BOLYAI UNIVERSITÁT  
BABEŞ-BOLYAI UNIVERSITY

TRADITIO ET EXCELLENTIA



*Babeş-Bolyai University is a public institution of higher education in Cluj-Napoca (Kolozsvár, Clausenburg), a city located in the heart of Transylvania, with over 300,000 inhabitants, plus approximately 50,000 students during the academic year ranging from September to July. The history of higher education in Cluj-Napoca and the roots of the Babeş-Bolyai University (UBB) dates back to the Jesuit college founded in 1581 by the Prince of Transylvania, Stephen Báthory. In this college Latin, Hebrew, and Greek were taught and graduates could earn the titles of Baccalaureus, Magister and Doctor. The rich heritage of higher education in Cluj-Napoca, is assimilated, cherished and passed on to students, teachers and to the entire city community.*

*UBB is a multilingual and multicultural institution with competitive Bachelor, Master and doctoral programs and with a valuable infrastructure (libraries, classrooms, laboratories). The low level of taxes (compared to other countries in the European Union) and the rich social and cultural life of the city are important reasons for many students for choosing our University for their studies.*

*The position of UBB regarding the importance and significance of doctoral studies is summarized by the statement of the Rector, Prof. Dr. Daniel David: "Babeş-Bolyai University values all three academic missions – education, research, and relationship to community -, but, as a world-class/research-intensive university, UBB puts the research at the core of its academic activities, thus having an active education (i.e., disseminating not only knowledge, but also the modality of knowledge generation) and an innovative relationship to society. In such a university the doctoral programs are "the generative core of the core" and therefore, let us make sure that at UBB the doctoral programs are active, diverse (i.e., covering all our programs), and of the highest quality, in order to keep and develop our world-class university status."*

*Doctoral studies represent, according to the Bologna Process, the third cycle of university studies, and has the purpose of expanding knowledge through original scientific research. They allow the acquisition of a level 8 qualification according to The European Qualifications Framework and to The National Qualifications Framework. Doctoral studies are currently regulated by the National Education Law No. 1/2011, the Government Decision No. 681/2011 fixing the framework for the Code of doctoral studies, and by the Babeş-Bolyai University internal regulations regarding the doctoral studies.*

*The Institute for Doctoral Studies at Babeş-Bolyai University coordinates all the administrative activities for doctoral studies, operating under the guidance of the Council for Doctoral Studies, and the councils of the doctoral schools. This structure ensures the unity of the doctoral studies, provides a framework for interdisciplinary approach, and facilitates communication between doctoral schools. The Council for Doctoral Studies includes nationally and internationally acknowledged academics, who are doctoral supervisors at UBB. The present director of the Council for Doctoral Studies is Prof. Dr. Zoltán Néda.*



*Cluj-Napoca. View from the Fortress Hill (Dealul Cetățuia)*



*Babeş-Bolyai University. Courtyard of the main building*



*Aula Magna. The University Ceremony Hall*





Doctoral (PhD) studies are organized at UBB by 31 doctoral schools in the following fields: Accounting, Administrative Sciences, Cinematography and Media, Biology, Chemical Engineering, Chemistry, Communication, Cybernetics and Statistics, Economics, International Affairs, Education Sciences, Environmental Sciences, Finance, Geography, Geology, History, Informatics, International Relations and European Studies, Law, Management, Marketing, Mathematics, Philology, Philosophy, Physics, Political Sciences, Psychology, Science of Sport and Physical Education, Sociology, Theatre, Theology. Around 400 students are enrolled each year. Doctoral studies are organized both as full-time and part-time programs. For EU candidates there are in each year more than 300 state-supported tuition free positions, and among these there are also around 150 available scholarships. A considerable number of PhD positions with tuition are also approved in each year by the university Senate. For admissions and for the specific doctoral program, each school has its specific demands and regulations.



The admission to doctoral studies is done by following an annual competition organized by the doctoral schools of UBB, coordinated by the Institute for Doctoral Studies. The annual competition usually takes place at the beginning of September. Holders of a master's degree (MSc) diploma or an equivalent diploma may participate at the admission exam. When registering, the candidate will choose first a doctoral supervisor, and competes for one of the positions coordinated by that supervisor. All technical details of the admission process are made public on the home-page of the Doctoral Studies Institute.

Doctoral studies usually cover a period of 3 academic years, ending with the public defense of an original work, the doctoral thesis, which is the result of the research activity carried out by the doctoral student. In case of a successful defense, followed by its validation by the National Council for Attestation of Academic Titles, Diplomas and Certificates (CNATDCU), the title of Doctor, with the corresponding acronym Dr., is given through an order of the ministry of national education.

Doctoral studies may also be organized as joint PhD's, and in this case the doctoral student from UBB has simultaneously two doctoral supervisors. The second doctoral supervisor will be chosen with the agreement of the first one, after the enrollment at UBB, and can be either from Romania or from another country. Recently the PhD candidate can enroll also in the European doctorate program, implying participation in international research internships with total length over 4 months. A strong and comprehensive internationalization of the PhD studies is a primary goal for UBB.

News related to the activity of the doctoral school from UBB, academic life of PhD students and their important achievements are published regularly at the PhD news site of the Doctoral Studies Institute.

János Bolyai, mathematician

Victor Babeş, biologist



<u>Mathematics and Computer Science</u> .....	5
<i>Director Prof. Dr. Gabriela CZIBULA</i>	
<u>Physics</u> .....	6
<i>Director Prof. Dr. Simion AȘTILEAN</i>	
<u>Chemistry</u> .....	7
<i>Director Prof. Dr. Ion GROSU</i>	
<u>Chemical Engineering</u> .....	8
<i>Director Prof. Dr. ing. Mircea CRISTEA</i>	
<u>Integrative Biology</u> .....	9
<i>Director Prof. Dr. Peter-Laszlo PAP</i>	
<u>Theoretical and Applied Geology</u> .....	10
<i>Director Assoc. Prof. Călin Gabriel TĂMAȘ</i>	
<u>Environmental Science</u> .....	11
<i>Director Prof. Dr. Laurențiu – Călin BACIU</i>	
<u>Geography</u> .....	12
<i>Director Prof. Dr. József BENEDEK</i>	
<u>History, Civilization, Culture</u> .....	13
<i>Director Prof. Dr. Maria CRĂCIUN</i>	
<u>Population Studies and the History of Minorities</u> .....	14
<i>Director Assoc. Prof. Dr. Ion CĂRJIA</i>	
<u>Philosophy</u> .....	15
<i>Director Assoc. Prof. Mihaela FRUNZĂ</i>	
<u>International Relations and Security Studies</u> .....	16
<i>Director Sci.Res. III. Dr. Abilitat. Mihai NICOARĂ</i>	
<u>“European Paradigm”</u> .....	17
<i>Director Assoc. Prof. Dr. Melania-Gabriela CIOT</i>	
<u>Sociology</u> .....	18
<i>Director Assoc. Prof. Dr. Mihai IOVU</i>	
<u>“Evidence-Based Assessment and Psychological Interventions”</u> .....	19
<i>Director Prof. Dr. Aurora SZENTÁGOTAI – TĂTAR</i>	
<u>“Applied Cognitive Psychology”</u> .....	20
<i>Director Prof. Dr. Andrei MIU</i>	
<u>“Education, Reflection, Development”</u> .....	21
<i>Director Prof. Dr. Cristian STAN</i>	
<u>Doctoral School “Didactica, Tradition, Development, Innovation”</u> .....	22
<i>Director Prof. Univ.Dr. Liliana CIASCAI</i>	
<u>Administration and Public Policy</u> .....	23
<i>Director Prof. Dr. Cătălin – Ovidiu BABA</i>	
<u>“Communication, Public relations and Advertising”</u> .....	24
<i>Director Prof. Dr. Delia Cristina BALABAN (BĂLAȘ)</i>	
<u>Political and Communication Sciences</u> .....	25
<i>Director Prof. Dr. Cristina NISTOR-BEURAN</i>	
<u>Linguistic and Literary Studies</u> .....	26
<i>Director Assoc. Prof. Dr. Bianca – Elena BICAN</i>	
<u>Hungarology Studies</u> .....	27
<i>Director Prof. Dr. Vilmos KESZEG</i>	
<u>Law</u> .....	28
<i>Director Prof. Dr. Paul – Dinu VASILESCU</i>	
<u>Physical Education and Sport</u> .....	29
<i>Director Prof. Dr. Emilia – Florina GROSU</i>	
<u>Theatre and Film</u> .....	30
<i>Director Prof. Dr. Laura TEUTIȘAN (PAVEL)</i>	
<u>Economics and Business Administration</u> .....	31
<i>Director Prof. Dr. Alexandru TODEA</i>	
<u>“Isidor Todoran” Doctoral School in Orthodox Theology</u> .....	32
<i>Director Pr. Prof. Dr. Vasile STANCIU</i>	
<u>“Ecumene” Doctoral School in Theology</u> .....	33
<i>Director Prof. Dr. Lehel LÉSZAI</i>	
<u>“Religion, culture, society” Doctoral school in Roman Catholic Theology</u> .....	34
<i>Director Lector Dr. abilitat Clara-Antonia CSISZAR</i>	
<u>Doctoral School of Engineering</u> .....	35
<i>Director Assoc. Prof. Dr. ing. abil. Zoltan – Iosif KORKA</i>	

# Doctoral School in Mathematics and Computer Science

## Doctoral supervisors Mathematics

### **Octavian AGRATINI**

*Operator Theory, Linear Approximation Processes, Quantum Calculus*

### **Dorin ANDRICA**

*Operator Theory, Linear Approximation Processes, Quantum Calculus*

### **Árpád BARICZ**

*Orthogonal polynomials and special functions*

### **Simion-Sorin BREAZ**

*Modules, Abelian Groups, Rings, Homological Algebra*

### **Brigitte - Erika BRECKNER**

*Topological Semigroups, Functional Analysis, Critical Point Theory, Analysis on Fractals*

### **Florina - Adriana BUICĂ**

*Qualitative Theory of ODEs, Bifurcation Theory, Dynamical Systems*

### **Teodor BULBOACĂ**

*Complex Analysis, Geometric Function Theory*

### **Teodora - Maria CĂTINAŞ**

*Approximation Theory, Numerical Methods*

### **Septimiu CRIVEI**

*Module theory, Category theory*

### **Teodor-Silviu GROŞAN**

*Theoretical Mechanics, Fluid Mechanics, Porous Media, Heat Transfer*

### **Mirela KOHR**

*Fluid Mechanics, Potential Theory, Complex Analysis, Partial Differential Equations*

### **Alexandru KRISTÁLY**

*Calculus of Variations, Critical Point Theory, Elliptic Problems, Riemann-Finsler Geometry, Geometric Analysis, Optimization on Manifolds*

### **Hannelore LISEI**

*Stochastic Analysis, Variational Calculus*

### **Andrei - Dorin MĂRCUŞ**

*Representation Theory of Groups and Algebras*

### **Sanda MICULA**

*Numerical methods for integral equations, Approximation methods for boundary value problems, Numerical solutions of fluid flow problems*

### **George - Ciprian MODOI**

*Pure Mathematics, Representation Theory, Group Theory, Matrix Theory, Category Theory, Algebra*

### **Adrian PETRUŞEL**

*Nonlinear Analysis, Differential Equations, Fixed Point Theory*

### **Cornel PINTEA**

*Geometry, Differential Topology, Algebraic Topology, Critical Points*

### **Nicolae POPOVICI**

*Vector Optimization, Operations Research, Convex Analysis, Generalized Convexity, Set-valued Analysis*

### **Radu PRECUP**

*Nonlinear Functional Analysis, Ordinary and Partial Differential Equations*

### **Grigore SĂLĂGEAN**

*Complex Analysis, Geometric Function Theory*

The Faculty of Mathematics and Computer Science from Babeş-Bolyai University offers 3rd cycle academic studies in the form of PhD programmes in Mathematics and Computer Science, organized by the Doctoral School of Mathematics and Computer Science. The degrees offered are PhD in Mathematics and PhD in Computer Science, respectively. Target groups are graduates of master programmes in Mathematics, Computer Science, Computer Engineering, Economics, and Natural Sciences. The main purpose of the programmes is to develop advanced research skills and to produce valuable and internationally visible scientific results in the fields of Mathematics and Computer Science. Our programmes are promoting high-quality fundamental and applied research in Mathematics and Computer Science, as well as interdisciplinary research, by involving the PhD students in the most important and recent research projects of the faculty, including international cooperation with academic and industrial partners.

The major research topics in Mathematics are: Algebra, Analysis, Geometry, Complex Analysis, Approximation, numerical and statistical calculus, Nonlinear operators and differential equations and Mechanics. In Computer Science, the research topics include: Applied computational intelligence, Machine Learning and applications, Search Based Software Engineering, Modeling and Simulation and Intelligent Data Analysis.

The mission of the Doctoral school in Mathematics and Computer Science is to allow PhD students to pursue a high-quality research in Mathematics and Computer Science, as well as to continuously increase the scientific quality of mentoring doctoral students and the quality of their PhD theses. The Doctoral School supports joint doctoral degrees. The holder of a PhD diploma in Mathematics and Computer Science may activate in any academic or research institution, as well as in industrial or administrative fields.



## Doctoral supervisors Computer Science

### **Anca - Mirela ANDREICA**

*Optimization, Artificial Intelligence, Data Mining, Complex Networking, Cellular Automaton, Image Processing*

### **Camelia CHIRA**

*Evolutionary calculus, Metaheuristics, Complex networks*

### **Gabriela CZIBULA**

*Automated training, Applied computing intelligence, Distributed artificial intelligence, Multiagent systems*

### **Istvan CZIBULA**

*Search-based software engineering, Software engineering*

### **Laura DIOŞAN**

*Artificial Intelligence, Automated Training, Soft Computing*

### **Horia POP**

*Intelligent Data Analysis, Soft Computing, Artificial Intelligence*

### CONTACT

Director: **Gabriela CZIBULA**

Email: gabriela.czibula@ubbcluj.ro

Secretary of the doctoral school:

**Ioana Chiorean**

E-mail: ioana.chiorean1@ubbcluj.ro

Web: <https://www.cs.ubbcluj.ro/>



# Doctoral School in Physics

## Doctoral supervisors

### **Simion AȘTILEAN**

*Nanoparticles for Biomedical and Technological Applications; Methods in Nanobiophotonics and Laser Microspectroscopy*

### **Lucian BAIA**

*Nanostructures for Environmental and Biomedical Applications*

### **Monica BAIA**

*Surface-enhanced Raman Spectroscopy as a Versatile Tool for Various Applications*

### **Zoltán BÁLINT**

*Image Analysis, Biophysics, Diagnostic Radiology, Molecular Biology*

### **Diana - Ancuța BENEĂ**

*Magnetic Materials and Magnetism, Material Characterization, Materials Science*

### **Titus - Adrian BEU**

*Transport Phenomena in Complex Nanostructures; Spectroscopy and Fragmentation of Fullerenes*

### **Ioan BOTIZ**

*Nanomaterials, Materials Processing, Nanostructured Materials*

### **Vasile CHIȘ**

*Applied Experimental and Theoretical Spectroscopy; Quantum Chemical Calculations of Molecular Properties  
Oxide Glasses*

### **Eugen CULEA**

*Structural Investigations by Spectroscopic Methods; Magnetic and Electrical Properties of Materials*

### **Grigore DAMIAN**

*Free Radicals and Antioxidants; Site-directed Spin Labeling*

### **Ioan – Leontin DAVID**

*Metallic Complexes; Molecular Clusters*

### **Iosif - Grigore DEAC**

*Condensed Matter Physics, X-ray Diffraction  
Magnetic Materials and Magnetism,*

### **Radu FECHETE**

*Nuclear Magnetic Resonance, Polymer Physics, Biomaterials, Numerical Simulations*

### **Monica - Olivia FOCȘAN**

*Fluorescence Spectroscopy, Fluorescence  
Gold Nanoparticles, UV-Visible Spectroscopy*

### **Ioan GROSU**

*Condense Matter Theory; Mesoscopic Systems*

### **Nicolae LEOPOLD**

*Biophotonics, Raman, SERS, Adsorbed Ions (Adions), Chemisorption*



*The doctoral programme in physics at Babeș-Bolyai University provides a stimulating and supportive atmosphere for research and learning. Our doctoral students follow studies in pure or applied and interdisciplinary fields, leading to careers in scientific research, academia and industry. All doctoral students making obvious progress receive full financial support for three years of study and they can be included in university research grants.*

*Faculty of Physics from Babeș-Bolyai University is consistently ranked in the top faculties and one of the most prestigious of Romania. The mission of the faculty is to promote and sustain within the local, regional, national and international community the development of scientific and cultural components. The faculty is located in the historical town of Cluj-Napoca, Cluj County, in the center of Transylvania.*

### **Ladislau NAGY**

*Interactions of Atoms and Molecules with Strong, Short Laser Pulses; Ionization of Atoms and Molecules by Charged Projectiles*

### **Zoltán NÉDA**

*Statistical and Computational Physics*

### **Petru PĂȘCUȚĂ**

*Physics, Materials Science*

### **Simona PÎNZARU**

*Biomolecular physics, Biotechnology  
Nanoparticle Synthesis*

### **Viorel POP**

*Nanocrystalline and Nanostructured Magnetic Materials*

### **Romulus TETEAN-VINȚELER**

*Solid State Physics; Magnetism*

### **Coriolan - Viorel TIUȘAN**

*Magnetism, Mezomagnetism,*

### **Mihai TODICA**

*Physical Properties of Polymeric and Macromolecular Materials*

### **CONTACT**

*Director: Simion AȘTILEAN*

*Email: simion.astilean@ubbcluj.ro*

*Secretary of the doctoral school:*

**Chis Teodora-Diana**

*Email: teodora.chis@ubbcluj.ro*

*Web: <http://www.phys.ubbcluj.ro/>*

# Doctoral School in Chemistry

## Doctoral supervisors

**Claudia - Valentina CIMPOIU**

*Chromatography, Antioxidant Activity*

**Tiberiu FRENȚIU**

*Atomic Spectrometry; Inductively coupled plasma mass spectrometry; Speciation Analysis*

**Ion GROSU**

*Organic Chemistry*

**Dan - Florin IRIMIE**

*Biochemistry and Biotechnology*

**Lorentz JĂNTSCHI**

*Molecular Chemistry*

**Constantin MĂRUȚOIU**

*Analytical Chemistry*

**Liana - Maria MUREȘAN**

*Physical Chemistry*

**Gabriela-Nicoleta NEMEȘ**

*Organometallic Chemistry*

**Csaba PAIZS**

*Biochemistry*

**Simona RADA**

*Multispectroscopic Studies on Glasses; Quantum Chemical Calculations; Magnetic, Optical and Electrical Properties of the Glasses and Vitroceramics*

**Costel SĂRBU**

*Analytical Chemistry and Chemometrics*

**Luminița SILAGHI - DUMITRESCU**

*Organic Chemistry*

**Radu - Lucian SILAGHI - DUMITRESCU**

*Bioinorganic Chemistry; Computational Chemistry*

**Anca - Daniela SILVESTRU**

*Organometallic Chemistry*

**Cristia - Sorin SILVESTRU**

*Organometallic Chemistry*

**Maria TOMOAI - COTIȘEL**

*Physical Chemistry*

**Monica - Ioana TOȘA**

*Biocatalysis; Bioprocesses; Chemoenzymatic methodologies; Chiral drug development*

### CONTACT

Director: **Ion GROSU**

E-mail: [ion.grosu@ubbcluj.ro](mailto:ion.grosu@ubbcluj.ro)

Secretary of the doctoral school:

**Cristea Ioana - Adina**

E-mail: [ioana.cristea@ubbcluj.ro](mailto:ioana.cristea@ubbcluj.ro)

Web: <http://www.chem.ubbcluj.ro/~sdc/>



The doctoral school in Chemistry is specialists in the field of inorganic chemistry, physical chemistry, organic chemistry and organometallic chemistry by approaching interdisciplinary areas of global interest such as: organometallic compounds of non-transition metals with potential applications in the storage and transfer of CO<sub>2</sub>, ligands in the transition metal coordination chemistry, materials with special optical or electronic properties with applications in obtaining chemical sensors or in homogeneous catalysis, NMR contrast agents (imaging), compounds with potential biological activity (antitumor activity, anti-inflammatory activity) electrode materials (modified electrodes, organic and inorganic aerogels, thin films with special properties) with electrocatalytic properties and photo(electro)catalytic properties, (amperometric and potentiometric) electrochemical sensors/ biosensors for detection of chemical species of biotechnological and biomedical interest, electrodeposition of metals and composites, corrosion of metals and artifacts, synthesis and characterization of modified electrodes in electroanalytical applications, electrochemical processes in the environment, nano-materials, materials with special optical and electronic properties, with applications in obtaining new materials, catalysts, miniature electronic devices, molecular design and drug design, iterative-dendritic synthesis; melamine dendrimers by iterative-convergent synthesis, melamine dendrimers as "drug delivery systems", design, synthesis, structure and properties of new technomimetic molecules (molecular machines) and of complex systems based on supramolecular associations, formation of supramolecular aggregates and their dynamics, guided by molecular recognition processes. Doctoral supervisors and doctoral students initiate and develop collaborations with prestigious research groups worldwide in the addressed fields, also pursuing the development of joint degree theses.





# Doctoral School Chemical Engineering



The doctoral school in Chemical Engineering educate specialists in Chemical and Process Engineering based on applied research in priority fields related to: chemical plant design, modeling, optimization and control, reactor engineering, transfer processes in the chemical industry, vapor-liquid equilibria, electrochemical engineering, electrosynthesis, electro metallurgy, applications of electrochemical engineering in environmental protection, in the electrotechnology of nonpolluting processes, renewable energy, carbon capture and storage technologies, advanced energy conversion, material engineering, cement engineering, composites and biomaterials, environmental pollution, water management, application of process engineering in other nonconventional fields (health, data mining, artificial intelligence, etc.).



## Doctoral supervisors

### **Paul Șerban AGACHI**

*Process Modeling; Simulation; Control and Optimization; Classical and Advanced Control Systems; Computer Aided Process Engineering (CAPE) Instruments; University Management; Research Management*

### **Călin-Cristian CORMOȘ**

*Chemical reaction engineering; Process design and integration; Carbon capture, Utilization and Storage (CCUS) technologies; Computer Aided Process Engineering (CAPE); Techno-economic and environmental assessment*

### **Vasile Mircea CRISTEA**

*Modelling and simulation of chemical processes (CFD applications). Development of traditional and model based control solutions. Modelling and classification applications using artificial neural networks and fuzzy logic. Data mining. Waste Water Treatment applications.*

### **József FAZAKAS**

*Oxide Materials; Sol-gel Engineering; Nanomaterials*

### **Petru ILEA**

*Electrochemical Engineering; Inorganic and Organic Electrosynthesis; Metal Recovery from Wastes*

### **Zoltán Kálmán NAGY**

*Process Control; Crystallization; Particulate systems engineering; Chemical Engineering*

### **Graziella – Liana TURDEAN**

*Nano/bio/materials having redox properties: preparation, investigation, applications; Electrocatalysis; Investigation of nano/bio/materials by electrochemical techniques; Corrosion of dental materials.*

### CONTACT

Director: **Mircea CRISTEA**

E-mail: [mircea.cristea@ubbcluj.ro](mailto:mircea.cristea@ubbcluj.ro)

Secretary of the doctoral school:

**Simona Gabriela Niculina**

E-mail: [gabriela.simon@ubbcluj.ro](mailto:gabriela.simon@ubbcluj.ro)

Web: <http://www.chem.ubbcluj.ro/~sdc/>



# Doctoral School in Integrative Biology

## Doctoral supervisors

### **Horia BANCIU**

*Microbial diversity of extreme environments;*

### **Manuela BANCIU**

*Biochemistry, Molecular Biology, Pharmacology, Drug Targeting*

### **Lujza KERESZTES**

*Origin and evolution of aquatic insects in the Carpathians, biological assessment of freshwaters using molecular methods;*

### **Bálint MARKÓ.**

*Conflict and cooperation: cohesion of insect societies and determinant factors;*

### **Péter LÁSZLÓ PAP**

*Avian biology, ecomorphology, ecomorphology of feathers and plumage, comparative studies;*

### **Marcel PÂRVU**

*Medicinal plants and Fungi;*

### **Mihai PUȘCAȘ**

*Alpine plant biogeography and phylogeography, plant taxonomy, plant biodiversity monitoring;*

### **Elena RÁKOSY**

*Plant genetic engineering for crop improvement – analysis of resistance to biotic and abiotic stress;*

### **László RÁKOSY**

*Insect taxonomy, ecology and conservation; Cultural ecology;*

### **Eszter RUPRECHT**

*Plant ecology, seed ecology, grassland ecology.*

### **Cristian SEVCENCU**

*General Physiology, Cardiovascular Physiology, Bioelectronic Medicine*

### CONTACT

Director: **Peter-Laszlo PAP**

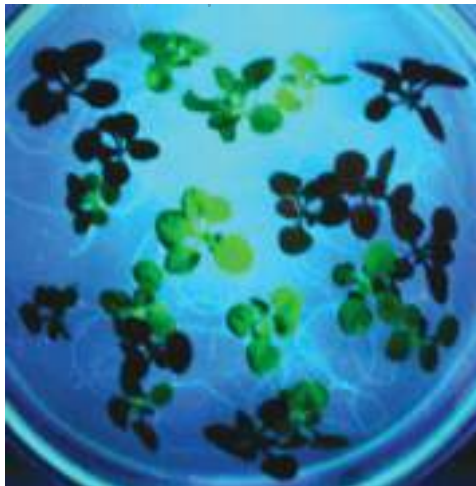
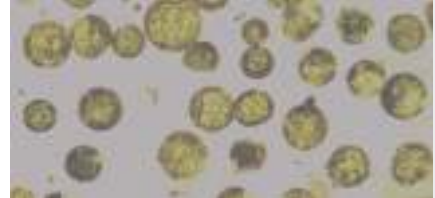
Email: [peter.pap@ubbcluj.ro](mailto:peter.pap@ubbcluj.ro)

Secretary of the Doctoral School:

**Rosca-Casian Oana**

Email: [oana.rosca@ubbcluj.ro](mailto:oana.rosca@ubbcluj.ro)

Web: <https://biogeo.ubbcluj.ro/sdbi/>



*The doctoral studies in the field of Integrative Biology, integrates in the pursued research interests the latest developments in modern biology. Students undertake research both in field works and well equipped laboratories covering subjects as: new insights in molecular taxonomy and ecology of different groups such as algae, bacteria, plants, butterflies and moth, ants, birds or other animals, including their status, ecology and protection.*

*Experimental biology addresses other important topics like cell and molecular biology of resistance to biotic or abiotic stress, plant modification through cell fusion or gene transfer, molecular biology of extremophiles as new sources of important compounds, cytogenetics, bionanotechnology and others.*

*Two research institutes, one research group, the Botanical Garden and Zoology Museum are also facilities which sustain the doctoral studies along with national and international research projects.*

# Doctoral School in Theoretical and Applied Geology

## Doctoral supervisors

### **Ioan BUCUR**

*Paleontology; Mesozoic Stratigraphy; Carbonate Micropaleontology and Sedimentology*

### **Vlad CODREA**

*Paleoenvironmental Reconstruction; Vertebrate Paleontology; Macroevolution; Paleoecology; Biochronology; Biostratigraphy; Paleogeography; Paleoclimate; Regional geology*

### **Sorin FILIPESCU**

*Micropaleontology; Stratigraphy; Paleoecology*

### **Ferenc Lázár FORRAY**

*Geochemistry; Stable isotopes; Paleoclimatology; Environmental Mineralogy; Mine pollution*

### **Ioan TANȚĂU**

*Palynology, Vegetation history, Palaeoecology, Quaternary geology*

### **Călin Gabriel TĂMAȘ**

*Ore deposits; Ore mineralogy; Breccia structures; Archaeometry; Ancient mining*

### **CONTACT**

Director: **Călin Gabriel TĂMAȘ**

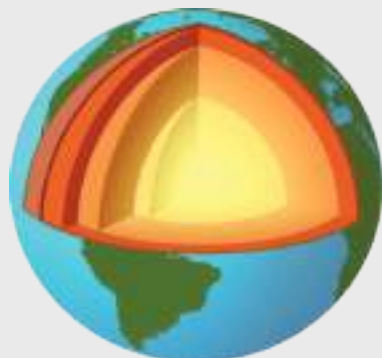
Email: [calin.tamas@ubbcluj.ro](mailto:calin.tamas@ubbcluj.ro)

Secretary of the Doctoral School:

**Săsăran Liana**

Email: [liana.sasaran@ubbcluj.ro](mailto:liana.sasaran@ubbcluj.ro)

Web: <https://biogeo.ubbcluj.ro/gta/>



*The training program of the Doctoral Studies in Theoretical and Applied Geology is focused on developing advanced research skills in subjects related to:*

- *Analysis of sedimentary basins;*
- *Evolution of geotectonic settings;*
- *Mineralogy, petrography and geochemistry of rocks and artefacts.*

*Research is carried out in modern laboratories equipped with competitive equipment for material processing, petrographic microscopes and stereomicroscopes, X-ray diffractometer and spectrometers for C and O isotopes, computers and reference material.*

*Each doctoral thesis represents a research project financed either via independent grants, or as a component of larger projects affiliated to the co-ordinating department under national or international project calls. Together with Master students, the doctoral students are members of larger research teams focusing on major geological topics.*

*International collaborations with similar institutions from Austria (Salzburg; Leoben), France (Marseille, Grenoble, Paris), Germany (Tübingen, Erlangen), Poland (Krakow), and Slovakia (Bratislava) offer the doctoral students opportunities for training stages abroad, and also also for theses elaborated in joint supervision.*



# Doctoral School in Environmental Science

## Doctoral supervisors

### **Călin BACIU**

*Environmental Analysis; Geochemistry of Fluids; Hydrogeology*

### **Mihail - Simion BELDEAN - GALEA**

*Analytical chemistry, Separation sciences*

### **Alida GABOR**

*Dosimetry and Nuclear Dating*

### **Delia Maria GLIGOR**

*Electrochemical sensors/biosensors for environmental monitoring*

### **Eugen GURZĂU**

*Environmental Health; Environmental Toxicology*

### **Alexandru OZUNU**

*Environmental Risk Analysis and Management; Natural and Technological Hazards; Environmental Assessment*

### CONTACT

Director: **Laurențiu – Călin BACIU**

Email: [calin.baciu@ubbcluj.ro](mailto:calin.baciu@ubbcluj.ro)

Secretary of the Doctoral School:

**Lucăcel Simona**

Email: [simona.lucacel@ubbcluj.ro](mailto:simona.lucacel@ubbcluj.ro)

Web: <https://enviro.ubbcluj.ro>

*The impact of the the contemporary society on the natural systems have revealed the necessity to rethink the complex relationship between Man and the Environment. Graduates from various fields of science and technology are welcome to this doctoral programme in Environmental Science. Our approach is interdisciplinary and able to accommodate different perspectives, with the ultimate goal of finding solutions to the current environmental challenges.*

*The programme is research-based and highly personalized for each of the enrolled students. It aims to develop the research skills and creative thinking necessary for successfully addressing the difficult environmental issues we face in the 21st century. The doctoral students will have the opportunity to receive training and apply their initiatives to a broad and exciting research field.*



# Doctoral School in Geography

## Doctoral supervisors

### **József BENEDEK**

*Human Geography; Territorial Development*

### **Adina Eliza CROITORU**

*Climate changes; Extreme weather events;  
Urban climate; The impact of weather events on  
human health*

### **Ştefan DEZSI**

*Human Geography; Tourism Geography*

### **Ioan Aurel IRIMUŞ**

*Engineering Geomorphology; Environmental  
Geomorphology, Geoarchaeology; Natural and  
Human Risks*

### **Dănuţ PETREA**

*Theoretic Geography; Geomorphology;  
Environment*

### **Călin-Cornel POP**

*Regional Geography, Geographical axis of  
Development*

### **Claudia POPESCU**

*Human Geography (Social Geography, Economic  
Geography)*

### CONTACT

Director: **József BENEDEK**

Email: [jozsef.benedek@ubbcluj.ro](mailto:jozsef.benedek@ubbcluj.ro)

Secretary of the Doctoral School:

**Rus Elena**

Email: [elena.rus@ubbcluj.ro](mailto:elena.rus@ubbcluj.ro)

Web: <https://geografie.ubbcluj.ro>



*Doctoral researches are focused on problems that have large socio-economic applicability in physical geography, human geography, regional geography, tourism geography. Doctoral studies are elaborated as solutions to some various geographic space problems generated by climatic and geomorphologic instability, resources limitation and energetic crisis, demographic dynamics, globalization and geopolitical identity crisis, geomorphological restriction in urban and rural space development, the need of comfort and specialized services, etc. The subjects imply large themes of theoretical geography, physical geography (dynamic geomorphology, engineering geomorphology, implemented geomorphology, environment, geoarchaeology, meteorology, hydrology, geoinformatics), territorial development planning, tourism geography, social geography, political geography, medical geography.*

*The Doctoral School in Geography provides full time doctoral students the possibility to choose among the disciplines available in two doctoral programmes: Physical Geography and Environment and Human and Regional Geography.*

*The students have the possibility to elaborate joint doctoral degrees with other EU universities professors and they can benefit from scholarships provided by programmes financed by the Romanian Government through its institutions (MEN, UEFISCU, CNCSIS etc.), or from European funds.*

*Romanian or foreign doctoral students have the possibility to elaborate and defend their doctoral thesis in international languages as well.*



# Doctoral School “History, Civilization, Culture”

## Doctoral supervisors

### **Radu ARDEVAN**

*Ancient History; Roman Provincial Civilization, Economy and Society; Ancient Epigraphy and Numismatics; History of the Specialist Research*

### **Constantin BĂRBULESCU**

*Modern Romanian History; Rural World History; Imaginary of the Human Body*

### **Mihai BĂRBULESCU**

*History of the Ancient World: History of Roman Dacia; History of the Ancient Culture; The Heritage of Antiquity*

### **Maria Silvia CRĂCIUN**

*Universal Medieval History; The History of Church and Religious Life in Pre-Modern Era*

### **Alexandru - Constantin DIACONESCU**

*Archaeology, Ancient History, Ancient Art History, Ancient Orient*

### **Adinel - Ciprian DINCĂ**

*Middle Ages Medieval History Church History Medieval Studies Historical Analysis*

### **Florin DRAȘOVEAN**

*Prehistory, History of Primitive Societies; Research Methods for Archeology*

### **Aurel – Gelu FLOREA**

*The Art and Archeology of Iron's Age; Second Period; Prehistoric Religions; The Civilization of Pre-Roman Dacia*

### **Florin Gheorghe FODOREAN**

*Archaeology and Ancient History: History and Archaeology of Roman Dacia, Landscape Archaeology during the Roman Period, Ancient Cartography and Geography*

### **Ovidiu Augustin GHITTA**

*Medieval and Pre-Modern History; History of The Church; Romanian-Cyrillic; Paleography*

### **Greta Monica MIRON**

*History of the Romanian Historiography, History of the Greek Catholic Church Of Transylvania*

### **Sorin MITU**

*Romanian and Universal Modern History; History of Sensitivity and Imagination*

### **Zsolt MOLNÁR - KOVÁCS**

*Prehistory, The History of Ancient Art*

### **Sorin NEMETI**

*Finding Arcobadara: Essay on the Geography and Administration of Roman Dacia*

### **Simona NICOARĂ**

*Modern History of Romania, Historical Anthropology, Cultural History.*

### **Toader NICOARĂ**

*Modern Romanian History; Historical Anthropology; The History of Collective Mentalities and Social Imaginary; Cultural History*

### **Coriolan Horațiu OPREAN**

*Archaeology and Ancient History: Roman Frontiers and the Military Life; Cultural Interaction with the Barbarian World; Migration Period; Landscape Archaeology*

### **Judith PÁL**

*Social and Political History of Transylvania (18th-19th centuries); History of the Cities; History of Armenians in Transylvania*

### **Ioan-Aurel POP**

*Medieval History: Political and Social History of Medieval Romania and Central South-East Europe; History of Medieval Institutions and Medieval Culture; Latin Paleography*

### **Doru RADOSAV**

*Cultural History; Oral and Recent History; Theory of History*

### **Ignác ROMSICS**

*Eszterházy Károly Főiskola, Eger History of the 20th Century; Modern History of Hungary*

### **Enikő RÜSZ - FOGARASI**

*History of Cities from Transylvania; Medieval and Pre-modern Institutions*

### **Marcela SĂLĂGEAN**

*Contemporary History; Political Regimes; Foreign Policy Decision Models; Political, economic, cultural and social models and systems in the XX-XXI centuries; International Relations*

### **Gábor SIPOS**

*History of Hungarian People; History of Libraries; Ecclesiastical History*

### **Șerban TURCUȘ**

*Medieval History; Church History; Auxiliary Sciences of History; History and Evolution of Diplomacy*

### **CONTACT**

Director: **Maria CRĂCIUN**

E-mail: [maria.craciun@ubbcluj.ro](mailto:maria.craciun@ubbcluj.ro)

Secretary of the Doctoral School:

**Negustor Gheorghe**

Email: [gheorghe.negustor@ubbcluj.ro](mailto:gheorghe.negustor@ubbcluj.ro)

Web: <http://hiphi.ubbcluj.ro>

*Doctoral School “History, Civilization, Culture” from the Faculty of History and Philosophy represents a highly profiled structure of academic excellence in the field of history and society. The school promotes multi and interdisciplinary scientific approaches, modern methodologies and is connected to major trends in the European and global historiography. The school promotes scientific innovation and bold approaches through the research of doctoral supervisors and doctoral students, being at the forefront of the contemporary historical knowledge of Romanian and European historiography.*

*The school organizes annually the Scientific Session of doctoral students (7 editions so far), publishes the Doctoral school yearbook (6 issues) and systematically cooperates with similar institutions in the country and abroad (with Al. I. Cuza University of Iași, University of Oradea, ELTE Budapest, Sapienza Università di Roma, Université Paris-Sorbonne, Université de Nantes, etc.)*



# The Doctoral School of Population Studies and the History of Minorities

## Doctoral supervisors

### **Ioan BOLOVAN**

*Culture and national identities in the 19<sup>th</sup> and 20<sup>th</sup> centuries;*

*History of the people in the modern and contemporary eras;*

*War and society in the 18<sup>th</sup>-21<sup>st</sup> centuries;*

*Historical continuities and discontinuities:*

*revolutions and reforms in the 18<sup>th</sup>-21<sup>st</sup> centuries*

### **Alina - Ioana BRANDA**

*Cultural Anthropology, Anthropological Approaches to Postsocialism, European Ethnology, Southern - Eastern European Cultures, Cultural Pluralism,*

*Multiculturalism, Ethnicity - Interethnic Relations, Transylvanian Jewish Communities, Restitution property*

### **Ion CĂRJA**

*The history of modern Romania;*

*The history of Transylvania in the modern and contemporary eras;*

*Confessional identities and ecclesiastical history;*

*Cultural and political-diplomatic relations*

*between Romania and Italy*

### **Luminița - Vasilica DUMĂNESCU**

*Modern History, Cultural Studies, World History,*

*19th Century History, Early Modern History*

*Gender History, Social History*

### **Ioan - Marius EPPEL**

*Family History, Historical Demography, Cultural*

*Anthropology, History of the Church, Religious*

*Anthropology*

### **Rudolf GRÄF**

*The history of the Germans in Romania;*

*The history of the Habsburg Empire;*

*The economic history of Transylvania and Banat;*

*The history of Central and Southeastern Europe*

### **Tudor - Alexandru SĂLĂGEAN**

*Cultural Heritage, Social and Cultural*

*Anthropology, Multiculturalism, Museum Studies,*

*Museum Exhibition, Heritage, Cultural Studies,*

*Cultural Diversity, Qualitative-ethnography,*

*Cultural Management*

### **Ana Victoria SIMA**

*Modern and Contemporary History, Church*

*History, Education History, Cultural Anthropology*

### **Szilárd TOTH**

*The history of national minorities in Romania,*

*The history of elites in Romania in the XX.*

*century, History of the University of Cluj, History*

*of the Cold War, International Institutions and*

*Organizations, History Teaching*

### **CONTACT**

Director: **Ion CĂRJA**

E-mail: [ion.carja@ubbcluj.ro](mailto:ion.carja@ubbcluj.ro)

Scientific secretary:

**Bud Alexandru-Bogdan**

E-mail: [alexandru.bud@ubbcluj.ro](mailto:alexandru.bud@ubbcluj.ro)

Web: <http://studiipopulatie.hiphi.ubbcluj.ro/>



*The Doctoral School of Population Studies and History of Minorities was organized in collaboration with the Center for Population Studies at the Faculty of History and Philosophy, following a desire to strengthen and develop the field of population research with the help of modern research methodologies. In Romania, there is currently no other doctoral school devoted exclusively to population studies. The doctoral theses that addressed issues in this field have focused primarily on a specific perspective— historical, sociological, demographic, economic or population geography, without in-depth research at a pluri- and multidisciplinary level that would respond to current sociological challenges.*

*The common objectives of the activities conducted by the Center for Population Studies, the German Institute, the Seminar of Historical Demography, the Institute of Ecclesiastical History, benefiting from specific infrastructure, equipment and logistics, coalesce with those of the Doctoral School of Population Studies and the History of Minorities:*

- 1. Provide the most appropriate support for PhD students*
- 2. Develop a program of excellence, to become, in time, the standard research in this area and come up with solutions to current demographic problems*
- 3. The transfer of knowledge to society*
- 4. Closer links with national and international research networks*

*The research program the doctoral school follows is based on recognizing the role of the research mechanisms behind the problems that contemporary society faces, ranging from a dramatic fall in fertility, population aging, migration for work to waves of migration which stormed Europe lately.*





# Doctoral School in Philosophy

## Doctoral supervisors

### Alexander BAUMGARTEN

*The Greek and Latin Neoplatonism of Late Antiquity;*

*Latin Medieval Philosophy; Latin Medieval Philosophical Paleography and Source Edition*

### Monica BRINZEI

*Latin Philosophy and Theology in the 14th-15th Century; Critical edition of medieval texts*

### Virgil CIOMOȘ

*Transcendental Philosophy; Contemporary Phenomenology – their application in psychoanalysis*

### Ion COPOERU

*Approaches of Normativity; Political Philosophy; Philosophy of Law; Applied Ethics*

### Márton - Attila DEMETER

*History of Political Ideas, Political Philosophy, Human Rights and Democracy*

### Virgil DRĂGHICI

*Mathematical logic: Incompleteness and Undecidability (Gödel, Rosser, Turing, Feferman, Smullyan). Modal logic. German Philosophy (Wittgenstein, Heidegger, Gadamer)*

### Mihaela - Cornelia FRUNZĂ

*Ethics, Philosophy of Religion, Social Exclusion, Social Movements, Applied Philosophy*

### Dan Eugen RAȚIU

*Everyday Aesthetics; Arts and Cultural Policies and Practices; Art and Public Space; Status of the Artist;*

*Postmodern Art Theories and Practices; Modernist Aesthetics and Art Criticism; Ontology of Art;*

*16th and 17th Centuries Theories of Painting*

### Rodica Marta VARTIC

*Interdisciplinary study of Romanian philosophy focusing both on the connections with the historical evolution of the Romanian culture and on the movement of ideas in Europe*

### Carol VERESS

*Semiological and Hermeneutical Problems of Knowledge, Communication and Culture; Investigations of Applied Philosophy*

### CONTACT

Director: **Mihaela FRUNZĂ**

Email: [mihaela.frunza@ubbcluj.ro](mailto:mihaela.frunza@ubbcluj.ro)

Secretary of the Doctoral School:

**Ile Vlad-Lucian**

Email: [vlad.ile@ubbcluj.ro](mailto:vlad.ile@ubbcluj.ro)

Web: <http://hiphi.ubbcluj.ro/doctorat/filosofie>



*Training of doctoral students in the Doctoral School in Philosophy is done in accordance with the research undertaken in the following main directions: phenomenology, semiology, hermeneutics, ethics, aesthetics, political philosophy, philosophy of culture and communication, history of philosophy, Romanian philosophy, Hungarian philosophy, interdisciplinary, transdisciplinary and applied research. Doctoral studies are conducted in Romanian, Hungarian, or in an international foreign language. Members of the Doctoral School in Philosophy are involved in numerous research projects, attend conferences, symposia, workshops, annual scientific sessions of doctoral students in joint programmes with other research institutions and doctoral schools at home and abroad, and their results are presented in numerous scientific publications issued by scientific journals and accredited publishers with BDI indexation. The Doctoral School in Philosophy collaborates with the Center for Ancient and Medieval Philosophy, and the Center for Applied Philosophy, providing the necessary information resources and facilities for research and guidance.*

# Doctoral School in International Relations and Security Studies

## Doctoral supervisors

### International Relations and Security

**Mihai Alexandru CROITOR**

*China's Foreign Policy; China's Security Policy; International Relations in the 20th Century, and in the 21st Century; International Organizations*

**Marian - Sergiu GHERGHINA**

*Party Politics, Legislative And Voting Behavior, Democratization, Use Of Direct Democracy*

**Ioan HORGA (University of Oradea)**

*European Integration; European Neighborhood Policy; EU Regional Policy Euroregional Studies*

**Adrian IVAN**

*European Union Governance; Theories of European Integration; National Minorities in International Relations*

**Erzsébet NAGYNÉ RÓZSA**

*Nuclear non-proliferation, Islam and the Middle East, Euro-Mediterranean cooperation*

**Luminița ROȘCA**

*Media discourse, Writing techniques, The genres of the press, Production in print and online, The public sphere*

### History

**Cristian Anton GĂZDAC**

*Ancient History; Archaeology; Numismatics; Restoration, Conservation, Protection of Cultural Heritage; Military Conflicts in Antiquity*

**Mihaela GLIGOR**

*Hindu Culture and Civilization*

**Lucian NASTASĂ-KOVÁCS**

*Modern and Contemporary History; Sociology of Culture and Education; Ethnic-cultural Diversity*

**Mihai NICOARĂ**

*History of Communism, Cultural History of Universities, Elites History*

### Sociology

**Valentina PRICOPIE**

*Sociology of Journalism; Media Transformation; International Communication; European Communication Policy; History of Sociology*

#### CONTACT

Director: **Mihai NICOARĂ**

Email: [nicoara.mihai@ubbcluj.ro](mailto:nicoara.mihai@ubbcluj.ro)

Secretary of the Doctoral School:

**Niste Valentina**

Email: [maria.niste@ubbcluj.ro](mailto:maria.niste@ubbcluj.ro)

Web: <http://hiphi.ubbcluj.ro/doctorat/RISS.html>



Our program brings together a group of highly prepared professionals, well known specialists in international relations, European studies, history, sociology. The PHD program of International Relations and European Studies and History has adopted multiculturalism as main development direction. The program's goal is to provide students with a strong foundation in theory and practice of international relations, philosophy, history and sociology that are necessary in order to conduct groundbreaking research. The PHD program is designed to facilitate and strengthen the development of experienced graduates and professionals by expanding their knowledge and enabling them to make key leadership contributions to their competency fields.



# Doctoral School “European Paradigm”

## Doctoral supervisors

### **Mircea BRIE**

*International relations and European studies; European borders. Border space in international relations; The process of European integration; European Union institutions and policies; European borders. Border space in international relations; European, national, regional and local identity; Issues of national minorities and social security*

### **Melania-Gabriela CIOT**

*Decision-making, idiosyncrasies, international and European negotiations, cultural diplomacy*

### **Valentin NAUMESCU**

*International relations and European studies; Foreign policy and diplomacy; Global and regional security; Strategic policies, great powers, balance of power; Transatlantic relations; Eastern Neighborhood of the European Union*

### **Nicolae PĂUN**

*Institutional and administrative reform of the European Union; Modeling the New Europe; The evolution of economic life. Contemporary economic systems; The history of European integration*

### **Vasile PUȘCAȘ**

*International relations, history of international relations, international and European negotiations, international politics, European integration, cultural diplomacy, international management*

### **Sergiu MIȘCOIU**

*Political science; Theories of international relations; Theories of political ideologies; Populism, extremism, radicalism, nationalism; Dynamics of contemporary political systems; Discourse theories with applications in political science*

### **Ovidiu PECICAN**

*History of international relations*

### **Enikő VINCZE**

*Anthropology of human rights; Social exclusion, discrimination, racism; Gender, nation, nationalism; Socio-economic condition of ethnic Roma in Europe and policies for Roma; Gender inequalities, feminism and gender policies in the EU; Social segregation and urban order*

### **CONTACT**

Director: **Melania-Gabriela CIOT**  
Email: melania.ciot@ubbcluj.ro

Secretary of the Doctoral School:

**Joldescu Stan Gianina**

Email: Gianina.joldescu@ubbcluj.ro

Web: <https://euro.ubbcluj.ro>



*Doctoral School “European Paradigm”, belonging to the Faculty of European Studies, has a double potential which gives its distinctive character within the context of doctoral schools at UBB: (1) by supervising doctorates in traditional domains it also promotes the multidisciplinary nature of approaches employed in research; (2) in addition to the scientific production of quality, the team of this school supports and practices in various forms the implication of academics in the public life.*

*To ensure administrative and professional conditions that can produce high quality doctoral theses, the team of the Doctoral School “European Paradigm” seeks collaboration with the other doctoral schools of UBB.*

*Beyond UBB, we promote and collaborate with academic institutions in the country and abroad as well as with organizations of the local, national and international civil societies. In addition to the development of scientific knowledge through fundamental empirical research interpreted on solid theoretical bases, we aim, through applied approaches, to contribute to the social responsibility of knowledge.*

# Doctoral School in Sociology

## Doctoral supervisors

### **Enikő Albert-LÓRINCZ**

*Social-psychology of Health; Social Risks, Disorder and Adaptation; Drug Abuse Prevention Research; Organizational Psycho-sociology.*

### **Dan-Florentin CHIRIBUCĂ**

*Communication and Media Studies; Social Impact of Information and Communication Technology.*

### **Mircea COMȘA**

*Electoral Studies; Survey Methodology and Practice; Social Desirability Impact Estimation.*

### **Irina CULIC**

*Sociology of the State; International Migration; Citizenship Studies; Comparative Political Sociology; Nationalism and Ethnicity; Social Epistemologies; Historical Sociology.*

### **László Csaba DÉGI**

*Health and Illness in Social Contexts; Psycho-social Care in Oncology; Prevention of the Neoplastic Diseases; Cancer and Work.*

### **Mihai-Bogdan IOVU**

*Child Abuse and Neglect; Children's Rights; Social Work Education.*

### **Cornelia MUREȘAN**

*Intergenerational and gender relationships, Social pathways and trajectories: family and residences, education and work, crime and recidivism*

### **Maria-Carmen PANTEA**

*Youth Studies; Sociology of Work and Employment.*

### **Maria ROTH**

*Policy and Program Evaluation; Childhood and Youth Studies; Children's Health Policies; Violence in Society.*

### **Valér VERES**

*Sociology of Youth; Social Structure and National Identity; Demography and Ethnicity in Transylvania.*

### **CONTACT**

Director: **Mihai IOVU**

Email: [iovu.mihai@ubbcluj.ro](mailto:iovu.mihai@ubbcluj.ro)

Secretary of the Doctoral School:

**Albu Irina**

Email: [irina.albu@ubbcluj.ro](mailto:irina.albu@ubbcluj.ro)

Web: <http://socasis.ubbcluj.ro>



*The members of the school conduct research on social phenomena and problems, demography, social mobility, public policy, evaluation of social services and of social intervention programmes, psycho-sociology of health and other branches of sociology.*

*The mission of the Doctoral School in Sociology is to develop competent human resource in carrying out scientific research and innovation. It aims at:*

- *Acquiring advanced theories, methods and techniques of scientific research in social sciences and competence regarding the management of social research projects;*
- *Developing scientific thinking in order to identify, formulate and solve research problems, issues regarding the ethics of research within social sciences, and also for the formation of ethical attitudes in scientific research;*
- *Developing skills regarding documentation, elaboration and capitalization of scientific works;*
- *Acquiring communication skills in the academic areas through the use of international languages in oral communication and the writing of scientific papers.*

*The Doctoral School brings together professors from sociology and social work and thus offering a wide range of competences and interests.*





# Doctoral School “Evidence-Based Assessment and Psychological Interventions”

## Doctoral supervisors

### **Daniel DAVID**

Clinical Psychology and Psychotherapy/ Clinical Research Methodology

### **Oana DAVID**

Clinical Psychology and Psychotherapy/Parenting/ Cognitive Behavioural Coaching

### **Anca DOBREAN**

Psychological Assessment and Diagnosis

### **Ștefan SZAMOSKÖZI**

Psychological Assessment/ History of Psychology

### **Aurora SZENTÁGOTAI - TĂTAR**

Clinical Psychology and Psychotherapy (Clinical Cognitive Sciences)

### CONTACT

Director: **Aurora SZENTÁGOTAI – TĂTAR**

E-mail: [aurora.szentagotai@ubbcluj.ro](mailto:aurora.szentagotai@ubbcluj.ro)

Secretary of the Doctoral School:

**Ana-Maria Cîrcu**

Email: [anamaria.puscas@ubbcluj.ro](mailto:anamaria.puscas@ubbcluj.ro)

Web: <http://clinicalpsychology.psiedu.ubbcluj.ro/>

*The Doctoral School - Evidence-based psychological assessment and psychological interventions represents the graduate programme (doctoral/postdoctoral) of both the Department of Clinical Psychology and Psychotherapy and the Department of Applied Educational Psychology of the Babeș-Bolyai University. The doctoral school is based on the “clinical science” and “scientist practitioner” paradigms, and promotes personalized evidence-based psychological interventions, thus providing a useful set of skills for both professional insertion on the work market and outstanding academic and research activity. The themes generally subscribe to the field of psychological assessment, clinical psychology, psychopathology, psychotherapy and psychological counselling, cognitive sciences, cognitive-behavioral coaching and positive psychology, genetic counselling, and evolutionary psychology. The research infrastructure is integrated within the International Institute for the Advanced Studies of Psychotherapy and Applied Mental Health (International Institute for Psychotherapy, an excellence research unit of European relevance, included in the MERIL platform), an academic spin-off of the Department of Clinical Psychology and Psychotherapy. Alumni can continue studying in post-doctoral programmes both in Romania and abroad, and/or can enter the labour market both in Romania and abroad, the doctoral school being a world-class institution, joining prestigious international-level academic networks.*



# Doctoral School “Applied Cognitive Psychology”

## Doctoral supervisors

**Adriana Smaranda BĂBAN**

*Behavior, Risk and Health; Psychosomatic and Behavioral Medicine; Vulnerability, Trauma and Resilience*

**Oana BENGA**

*Typical and Atypical Development; Early Mental Health*

**Petru Lucian CURȘEU**

*Organizational Behavior, Group Dynamics, Group Cognition*

**Mircea MICLEA**

*E-therapy and Counseling; Anxiety, Applied Cognitive Sciences*

**Andrei Cristian MIU**

*Emotion and Cognition; Emotions and Psychopathology; Psychophysiology of Emotions*

**Oana - Maria NEGRU - SUBȚIRICĂ**

*Identity development, Goal structures and processes in human self-regulation, Emerging adulthood,*

**Nicolae Adrian OPRE**

*Implicit cognition. Cognitive-behavior Interventions in Educational and Organizational Settings*

**Laura Visu-PETRA**

*Developmental Science; Emotion and Cognition; Developmental Psychopathology*

**CONTACT**

Director: **Andrei MIU**

Email: andrei.miu@ubbcluj.ro

Secretary of the Doctoral School:

**Ana-Maria Cîrcu**

Email: anamaria.puscas@ubbcluj.ro

Web: <http://psychology.psiedu.ubbcluj.ro/en/>



*The Doctoral School “Applied Cognitive Psychology” is centered on the development of advanced research programmes in cognitive psychology applied in health, education and work. The main objectives of the doctoral school reside in improving the theoretical and empirical knowledge, in the national and international dissemination of the results, and in ensuring that the practice of psychology is evidence-based. For the doctoral students we provide a high-quality environment for their development, theoretical education and integration in the general theme of scientific research of their doctoral supervisor. The doctoral students and their supervisors are involved in projects and activities of high scientific and applied relevance (for example FP7, CNCS, interdisciplinary groups and international networks of study in collaboration).*

*The doctoral research themes are mainly focused on the primary domains: health, vulnerability and risk, respectively intervention, prevention and development, approached through the perspective of cognitive sciences. The transfer of knowledge and research abilities is ensured by the courses, conferences, workshops, individual meetings or debates in the groups of interests.*



# Doctoral School “Education, Reflection, Development”

## Doctoral supervisors

### Ion ALBULESCU

*Comparative research in educational Alternative Pedagogies; Pedagogical Doctrines; Theory and Methodology of Teaching*

### Muşata - Dacia BOCOŞ - BINȚIŢAN

*Methodology of Scientific Research and the Elaboration of Research Papers in Educational Sciences*

### Horaţiu - Roco CATALANO

*Teaching and Learning, Teacher Training, Pedagogy, Professional Development, Curriculum Development, Teaching Methodology*

### Vasile CHIŞ

*Developments in Contemporary Pedagogy*

### Alina - Felicia ROMAN

*Teaching and Learning, Career Counseling, Education Research, Pedagogics*

### Alina Simona RUSU

*Interdisciplinary (Ethological and Educational) Investigation of Human Behaviour; Human-Animal Interactions*

### Nicolae Cristian STAN

*Theory and Methodology of Didactic Evaluation; Educational Communication Ethics and professional deontology*

### CONTACT

Director: **Cristian STAN**

Email: cristian.stan@ubbcluj.ro

Secretary of the Doctoral School:

**Ana-Maria Cîrcu**

Email: anamaria.puscas@ubbcluj.ro

Web: <https://dse.psiedu.ubbcluj.ro/doctorat-sti-inte-ale-educatiei>



The objectives of the “Education, Reflection, Development” Doctoral School are set according to the priorities regarding the doctoral programmes in Romania and abroad, in the domain of Education Sciences, as follows:

- Providing guidance for the doctoral students and tenured staff of the doctoral school towards priority themes on contemporary world issues: change, vulnerability, crisis, learning, adaptation, motivation, recovery, rehabilitation, etc.
- Focusing the doctoral theses on field research (research-action type projects) but also on the development of fundamental and applied research topics in the field of new pedagogies, such as: contemporary educational systems, management, curriculum, teaching, learning, partnerships, special educational needs, access to education, etc.
- Encouraging doctoral students and the supervising teachers to develop new educational technologies, new educational supporting technologies in schools, in society as a whole, focusing on Advanced Distributed Learning (ADL);
- Representing with priority in the doctoral thesis the special pedagogical confrontations during kindergarten and school: emotional disturbances, aggression, violence, attention deficit, hyperactivity, equality, social exclusion, etc.
- Enhancing interactivity during doctoral school and supporting research projects, scientific paper presentations during the research stage and the thesis defence;
- Including doctoral students with relevant results in the postdoctoral programmes of the faculty;
- Enhancing the experimental character of the doctoral school, of the interdisciplinary, development of a doctoral environment characterized by interactivity.



# Doctoral School “Didactica. Tradition, Development, Innovation”

## Doctoral supervisors

**Liliana CIASCAI**

*DIDACTICS today: deepening, developments and research directions*

**Maria - Eliza DULAMĂ**

*Qualitative and quantitative research methods in education*

**Iuliana - Hortensia ZSOLDOS - MARCHIŞ**

*Principles and practices in designing educational research*

**Dorin - Corneliu OPRIŞ**

*Ethics and academic integrity*

### CONTACT

Director: **Liliana CIASCAI**

Email: [liliana.ciascai@ubbcluj.ro](mailto:liliana.ciascai@ubbcluj.ro)

Secretary of the Doctoral School:

**Puşcaş Ana-Maria**

Email: [anamaria.puscas@ubbcluj.ro](mailto:anamaria.puscas@ubbcluj.ro)

Web: <http://ddse.psiedu.ubbcluj.ro/index.php?id=coala-doctoral-bdidactica-tradiie-dezvoltare-ino-vaier>

*The “Didactics. Tradition, Development, Innovation” doctoral school from Babes-Bolyai University conducts advanced research and prepares researchers in the field of Psychology and Educational Sciences. The main research topics are related with teaching methodologies of different school subjects/academic disciplines. Through its activities, the doctoral school makes a consistent contribution to the national and international research in the field of Education Sciences. The scientific research results obtained by PhD students are usually published in well-recognized journals and conference proceedings.*

*The aim of the programs organized by the school is to form graduates that are recognized for their high degree of knowledge, innovation and didactic creativity, and are competent in achieving the desired connection between research and practice. PhD students are prepared to become specialists in public policies, in the implementation of effective training programs, in the development of good practice guides and products with social or commercial value.*

*The doctoral school organize an annual international conference for PhD students to give them the opportunity for presenting their work and meet other PhD students, making international connections with those working in related subjects. Students are constantly encouraged to participate in international conferences from Romania and abroad. PhD students can participate also in the Erasmus+ mobility program, having the opportunity to study at a university from abroad. The school has many collaborations with doctoral school from other universities.*





# Doctoral School in Administration and Public Policy

## Doctoral supervisors

### **Raluca - Ioana ANTONIE**

*Evaluation, Research in Social Sciences and Quality of Life. Subsequent research subjects: Activities, Projects and Programs Evaluation; Impact Assessment; Meta-evaluation; Process Assessment; Performance Evaluation; Research in Public Administration; The impact assessment of Technology on the Quality of Life; Quality of Life*

### **Cătălin Ovidiu BABA**

*Public Policy; Public Policy Analysis; Health Programs: Design, Implementation and Evaluation; Health Policy and Management; Social and Behavioral Health; Occupational and Environmental Health.*

### **Răzvan – Mircea CHERECHEȘ**

*Public Health; Health Systems; Social and behavioral health; Occupational and environmental health; Healthcare policy and management; Social epidemiology; Health management*

### **Christian - Radu CHEREJI**

*Conflict Analysis; Traditional Conflict Management Practices; Conflict Management Systems; Conflict and Development; Comparative Mediation Systems; Mediation Techniques; Negotiation*

### **Călin Emilian HINȚEA**

*Public Management; Strategic Planning, Leadership, Management Reform and Organizational Culture in the Public and Nonprofit Sector*

### **Dan Tudor LAZĂR**

*Finance; Budgeting; Fiscal Policy; Taxation; Local Economic Development*

### **Felicia - Cornelia MACARIE**

*Gender discrimination in management; Gender impact on the organizational culture in public sector organizations; Women's presence in the top management of public sector organizations; The organizational behaviour of groups; The organizational culture of public sector organizations  
Measuring gender equality in public sector organizations; The management of time  
Gender discrimination in education; The internal public audit - a foundation for organizational performance; The evolution of internal public audit*

### **Bogdana NEAMȚU**

*Smart growth; Sustainable urban development; Urban sprawl and tools used to control/manage it; Sustainable development metrics; Sustainability reporting; Culture and urban development - Role of festivals and creative industries in urban development; Transparency and free access to information as prerequisites for good governance; Alternative dispute resolution mechanisms in public law - Role of Ombudsman institutions; Sustainable public procurement; Corruption in public procurement*

### **Viorel - Ion Stănică**

*Community Development; Rural Development; Strategic Planning; Social Responsibility and Local Development; Territorial Organization*



*The scientific approach of the school is a multidisciplinary one with focus on practical issues of administration and public policy in Romania, treated in European and international context.*

*Supervisors of doctoral studies in this school have an extensive experience in both theoretical and practical areas, the last one acquired in various institutions and structures of local and central administration.*

*Doctoral School in Administration and Public Policy collaborates with prestigious institutions of education and research around the world as well as academics and field practice.*



### **CONTACT**

Director: **Cătălin – Ovidiu BABA**

Email: [catalin.baba@ubbcluj.ro](mailto:catalin.baba@ubbcluj.ro)

Secretary of the Doctoral School: **Ciupei Cristina**

Email: [cristina.ciupei@ubbcluj.ro](mailto:cristina.ciupei@ubbcluj.ro)

Web: <http://www.apubb.ro/studii/doctorat/>

# Doctoral School of "Communication, Public Relations and Advertising"

## Doctoral supervisors

### **Delia Cristina BALABAN (BĂLAȘ)**

*Advertising – theoretical and empirical approaches  
Media communication, Communication on Social  
Network Sites*

### **Smaranda COSMA**

*Marketing principles, Destination and international  
marketing*

### **Sandu FRUNZĂ**

*Biopolitics, bioethics and religion in the XX1st  
century Romania, Personal brand and image  
construction in the political space*

### **Ioan HOSU**

*Communication in the political area  
Organizational and strategic communication*

### **Ioana Raluca IANCU**

*Advertising New Media Research*

### **Cosmin Vasile IRIMIEȘ**

*Public Relations Branding*

### **Magor KÁDÁR**

*Branding  
Strategical thinking and planning*

### **Flaviu Călin RUS**

*Public relations – theoretical and empirical  
approaches, Communication and PR in the political  
field*

### **Orsolya VINCZE**

*New media and culture, Media literacy*

### CONTACT

Director: **Delia Cristina BALABAN (BĂLAȘ)**

Email: [delia.balas@ubbcluj.ro](mailto:delia.balas@ubbcluj.ro)

Secretary of the Doctoral School: **Cadar Tabita**

Email: [tabita.cadar@ubbcluj.ro](mailto:tabita.cadar@ubbcluj.ro)

Web: <https://sdcropp.ro>



*The Doctoral school of "Communication, Public Relations and Advertising" includes coordinators from the communication sciences and marketing fields, with research areas revolving around the communication analysis. Their scientific pre-occupations comprise public relations, advertising, branding, political communication, public communication, strategic communication, communication on social network sites, religious communication etc.*





# Doctoral School in Political and Communication Sciences

## Doctoral supervisors

**Elena ABRUDAN**

*Journalism and Communication; Visual Culture*

**Gabriel BĂDESCU**

*Comparative Politics; Political Behavior; Public Policy; Political Methodology*

**Ramona HOSU**

*Communication and Journalism*

**Cosmin – Gabriel MARIAN**

*Political rules design and effects*

**Andreea - Alina MOGOȘ**

*Traditional and New Media*

*Representations; Visual Methodologies;*

*Photojournalism; Media effects.*

**Cristina NISTOR-BEURAN**

*Radio and TV*

**Ilie RAD**

*Journalism and Communication; Style and Communication; Press and Communication History*

**Zoltan TIBORI - SZABO**

*20th Century History, Modern History, Holocaust, Jews, Contemporary History, Historical Analysis, World History, Comparative History*

### CONTACT

Director: **Cristina NISTOR-BEURAN**

Email: [cristina.nistor@ubbcluj.ro](mailto:cristina.nistor@ubbcluj.ro)

Secretary of the Doctoral School: **Cadar Tabita**

Email: [tabita.cadar@ubbcluj.ro](mailto:tabita.cadar@ubbcluj.ro)

Web: <https://stiintepolitice.fspac.ubbcluj.ro/english/academic-programs/doctoral-program>



*Although very young, the school has gained a great reputation through its projects: conferences, symposiums, roundtables, book launches, workshops, etc. The school plans to develop unique dictionaries in the Romanian culture, to create an important school of the history of journalism and communication. The purpose of these activities is to make use of the valuable journalistic heritage of our great political scientists, political analysts, writers and Romanian journalists.*

*Every year, in February, the school organizes a scientific seminar of the doctoral students. The papers presented during this scientific session are published in a volume or in Romanian and foreign journals.*

*The Political and Communication Sciences doctoral programme is trying, throughout the topics, to answer some of the urgent needs of the community and to fill in the gaps in the field of bibliography.*

*A particularity of our doctoral programme is that all the theses will be published by a prestigious publishing house, "Doctoralia" collection, soon after the defence. In this way, all research results will be introduced automatically in the national and international circuit.*



# Doctoral School in Linguistic and Literary Studies

## Doctoral supervisors

### **András F. BALOGH**

*German Literature in Central and Southeastern Europe; Intercultural networks*

### **Bianca-Elena BICAN**

*German Culture and Literature in Transylvania and Romania; Intercultural German-Romanian Studies; Contemporary German Literature*

### **Ioana BICAN**

*Nineteenth and Twentieth Century Romanian Literature; History of Romanian Literary Ideas; Romanian Authors Writing in French; Archives of Contemporary Literature*

### **Ștefan BORBÉLY**

*World and Comparative Literature; Mythology*

### **Corin BRAGA**

*Comparative Literature; Imagination Studies; Religion and Literature; Utopias and Dystopias; Archetypes and Anarchetypes*

### **Ruxandra BRAGA**

*Comparative Literature; Imagination Studies; Modern and Postmodern Poetry, History of Ideas, Contemporary Fiction*

### **Adrian CHIRCU-BUFTEA**

*Romanian Language and Romance Linguistics*

### **Ligia-Stela FLOREA**

*Linguistics, Pragmatics, Discourse Analysis*

### **Rodica-Monica FRENȚIU**

*Cultural Semiotics; Japanese Poetics; Traductology*

### **Yvonne GOGA**

*Nineteenth, Twentieth and Twenty-first century French Literature; Traductology; Francophone Literatures*

### **Anca - Luminița GREERE**

*Translation Studies, Specialised Translation, Quality Assurance, Teaching Methodologies For Professionally Oriented Education*

### **Simona - Alina JIȘA**

*Modern And Contemporary French Literature*

### **Michaela MUDURE**

*Women's Literature; Enlightenment, Postcolonial Literatures; American Studies*

### **Ștefan OLTEAN**

*Possible World Semantics  
Multilingual Practices*

### **Horia - Flavius POENAR**

*Literary Theory, World Literatures, English Literature*

### **Liana POP**

*French and Romanian Linguistics; Pragmatics, Discourse Analysis; Oral Communication*

### **Mihaiela POP (URSA)**

*Comparative Literature and Cultural Studies; Gender Studies; Digital Humanities; Fictional Worlds*

### **Rodica POP**

*French and Belgian Literature; Francophone Comparatism; Traductology*

### **Sanda Tomescu BACIU**

*Norwegian Literature; Ibsen Studies; Comparative Nordic Literatures*



*The Doctoral School of Linguistic and Literary Studies – organized at the Faculty of Letters aims at the continuation of the Bachelor and Master`s studies on scientific grounds which could allow the doctoral candidate to follow either the research path, or the teaching career at an academic level. The scientific and didactic activities encompassed in the curricula range from courses, seminars, laboratories, to workshops. The conferences and formation modules provided by the faculty, the university or other partner institutions enable students to do and conduct scientific research. The doctoral school encourages doctoral students to take part in international exchange programmes carried out in foreign languages which improve the competences specific to philological studies. In addition, the doctoral school actively contributes to the organization of activities in foreign languages by inviting international specialists and doctoral co-advisors in order to raise the local scientific prestige and raise awareness of the doctoral programmes offered in our university.*

#### CONTACT

Director: **Bianca – Elena BICAN**  
Email: bianca.bican@ubbcluj.ro

Secretary of the Doctoral School:

**Constantin Alexandra**

Email: alexandra.constantin@ubbcluj.ro

Web: <https://lett.ubbcluj.ro/scoala-doctorala-de-studii-lingvistice-si-literare/>



# Doctoral School in Hungarology Studies

## Doctoral supervisors

### **Attila BENŐ**

*Sociolinguistics; Language Contacts; Traductology*

### **Emese EGYED**

*European Literary Contacts (16th-21st Centuries), History of Drama; Education through Philological Studies; Hungarian Literature; French Literature in Hungary*

### **Csilla GÁBOR**

*History of Ancient Literature*

### **Vilmos KESZEG**

*Anthropology of Writing; Anthropology of Narrative; 20th Century Biographies*

### **Ferenc POZSONY**

*Material and Social Culture; Interethnic Relations; Customs*

### **Levente SZABÓ**

*Literary Criticism, Comparative Literature Cultural History, Social History*

### **Vilmos TÁNCZOS**

*Ethnology of Religion; Archetypal Symbolism in Folclore and in Popular Culture; The Culture of the Moldavian Csángós*

### CONTACT

Director: **Vilmos KESZEG**

Email: vilmos.keszeg@ubbcluj.ro

Secretary of the Doctoral School: **Andre Irenke**

Email: maria.andre@ubbcluj.ro

Web: <http://hunlit.lett.ubbcluj.ro/hu/doktori-kepzes>



*The Doctoral School in Hungarology Studies covers the research areas of philology (language and literature, journalism, ethnology) for studies in Hungarian language at Babeş-Bolyai University. The professors of the doctoral school belong to the Department of Hungarian Literature, to the Department of Hungarian and General Linguistics and to the Department of Hungarian Ethnography and Anthropology as well as to the Department of Journalism and Political Sciences (Faculty of Political, Administrative and Communication Sciences). Visiting professors of the school are specialists in these fields. The doctoral school promotes interdisciplinary and intercultural dialogues and cooperates with scientific institutes in the domain (Hungarian Academy of Sciences, Transylvanian Museum Society and others) and with other doctoral schools and scientific institutes.*

*The doctoral students' articles and theses are published in accredited scientific journals as Erdélyi Tudományos Füzetek, Emberek és kontextusok, Erdélyi Múzeum, Nyelv- és Irodalomtudományi Közlemények, Irodalomtörténeti füzetek.*



# Doctoral School in Law

## Doctoral supervisors

**Sorin Octavian ALĂMĂREANU**  
*Public Law*

**Dan Mircea BOB**  
*Private Law; Roman Law*

**Sergiu BOGDAN**  
*Criminal Law*

**Radu-Nicolae CATANĂ**  
*Business Law*

**Dacian-Cosmin DRAGOȘ**  
*Administrative Law; European Administrative Law*

**Gheorghică MATEUȚ**  
*Public Law*

**Ovidiu-Laurențiu PODARU**  
*Administrative Law*

**Ionuț-Florin POPA**  
*Private Law*

**Ioan-Florin STRETEANU**  
*Penal Law*

**Paul - Dinu VASILESCU**  
*Private Law*

**Ioana VASIU**  
*Penal Law*

### CONTACT

Director: **Paul – Dinu VASILESCU**  
Email: [paul.vasilescu@ubbcluj.ro](mailto:paul.vasilescu@ubbcluj.ro)

Secretary of the Doctoral School:  
**Pop Simona Maria**  
Email: [simona.pop@ubbcluj.ro](mailto:simona.pop@ubbcluj.ro)  
Web: <http://law.ubbcluj.ro/>

*The Faculty of Law organizes the Doctoral School in Law (public and private law). Doctoral studies are open to all candidates holding a Master's degree or an equivalent academic degree.*

*The goal is to train researchers in law at the highest level of international competitiveness. The doctoral school is led by a director responsible for the day-to-day management and is accountable to the Council for Doctoral Studies.*

*The mission of the doctoral school is to organize the recruitment of future doctoral students through a public and transparent procedure in the context of the general policy of the university ; to ensure the scientific quality of mentoring doctoral students by personalizing their work, while ensuring the best conditions for the development of their doctoral thesis. The aim is also to ensure that doctoral students learn the research methods of law, based on continental law and comparative methods, as well as on the EU law.*

*The doctoral training is designed to best meet the major current topics in legal research and to be able to adapt to the future ones.*

*The doctoral school can support scientific and intellectual exchange between doctoral students of the doctoral schools in the university, as well as with national and international partners of the university. The doctoral school supports joint doctoral degrees. This objective is pursued through collaborative actions with partner higher education institutions.*





# Doctoral School in Physical Education and Sport

## Doctoral supervisors

**Daniel Henry Franck COURTEIX**

*Exercise Physiology, Sports Medicine, Osteoporosis*

**Emilia Florina GROSU**

*Movement Anthropology; Motor Learning; Motor Development; Physical Activity, Fitness and Health; Mental Training; Performance in Sport;*

**Iacob HANȚIU**

*Human Movement Study; Sport Coaching; Biomechanics; Health Related Physical Activity; Physical Education*

**Dan MONEA**

*Sport and Motric Performance*

**Iosif SANDOR**

*Exercise Physiology, Exercise Performance Strength & Conditioning, Sport Biomechanics*

### CONTACT:

Director: **Emilia – Florina GROSU**

Email: [emilia.grosu@ubbcluj.ro](mailto:emilia.grosu@ubbcluj.ro)

Secretary of the Doctoral School:

**Emanuela Barboni**

Email : [emanuela.barboni@ubbcluj.ro](mailto:emanuela.barboni@ubbcluj.ro)

Web: <https://sport.ubbcluj.ro/en/doctorat/>



*The field of doctoral studies in which the Doctoral School of Physical Education offers PhD is Science of Sport and Physical Education. Current doctoral students are from Romania and Israel, and courses are taught in English and Romanian. Within the FEFS Cluj-Napoca Erasmus programme the following international partnerships have been signed at doctoral level: Universite de Rouen (FR), National and Kapodistrian University of Athens (GR), Università degli Studi di Roma Foro Italico (IT), University Summelweis (HU), Universidade de Tras-os-Montes e Alto Douro (PT).*



# Doctoral School in Theatre and Film

## Doctoral supervisors

### Theatre and Performing Arts

**Miklós BÁCS**

*Theatre Aesthetics; Theatre Pedagogy*

**Diana COZMA**

*Theatre Studies; Theatre Anthropology*

**Miriam - Simona CUIBUS**

*The theatricality of the bovaric phenomenon, Hermeneutics, poetics / poetry and senses of corporality in the art of the actor;*

**Daniela GOLOGAN (Miruna RUNCAN)**

*Audience Studies; Theatre and Film Semiotics; Theatre History*

**András HATHÁZI**

*Theatre Aesthetics; Theatre Pedagogy*

**Anca - Michaela MĂNIUȚIU**

*Theatre Theory; Theatre Aesthetics*

**Mihai MĂNIUȚIU**

*Contemporary Theatre; Theatre Aesthetics*

**Laura TEUȚIȘAN (PAVEL)**

*Theatre Aesthetics; Performance Theory and Cultural Analysis*

**András VISKY**

*Hamburg drama, stage adaptation and contemporary drama.*

### Cinematography and Media

**Dan - Radu CUREAN**

*Film and television image, Documentary production, Media formats*

**Rodica - Otilia MOCAN**

*New Arts in the Digital Age; Art and science in interactive documentary; Posthumanism and Transhumanism in Contemporary Art.*

**Doru Aurel POP**

*Film criticism; Visual culture and visual communication; Contemporary European and Romanian cinema*

**Ioan Simion POP CURȘEU**

*Film Aesthetics; Film Theory*

**Ileana - Nicoleta SĂLCUDEAN**

*Cultural Studies, Sociology Of Culture, Creative Industries.*

**Florin - Claudiu TURCUȘ**

*Post-communist imagery and ideology: literature and cinema; Political approaches of the Romanian film from the socialist period;*

**Florin ȚOLAȘ**

*Film and Television Image*

**CONTACT**

Director: **Laura TEUȚIȘAN (PAVEL)**

Email: [laura.pavel@ubbcluj.ro](mailto:laura.pavel@ubbcluj.ro)

Secretary of the Doctoral School: **Pedestru Mihai**

Email : [mihai.pedestru@ubbcluj.ro](mailto:mihai.pedestru@ubbcluj.ro)

Web: <http://doctorat.ttv.ubbcluj.ro/>



*The Doctoral School in Theatre at Babeș-Bolyai University offers to its students a professional, open and supportive environment for research concerning the full spectrum of performing arts and contiguous fields such as theatre history, dramatic literature, performance theory, audience studies, theatre pedagogy or cultural management and marketing.*

*Advanced courses are offered in the areas of theatre semiotics, audience studies, contemporary stage-directing, the historical relationships between theatre and cultural and political ideologies, actively encouraging interdisciplinary approaches (anthropology, sociology, film studies etc.).*

*Our faculty, a mix of prominent theatre practitioners and accomplished scholars, will constantly strive to assist the student during the research, writing and publishing stages of the doctoral thesis.*





# Doctoral School in Economics and Business Administration

## Doctoral supervisors

### Accounting

**Adela DEACONU**

*Accountancy*

**Cristina - Silvia NISTOR**

*Accountancy*

**Adriana TIRON-TUDOR**

*Financial and non-financial reporting; Public sector accounting, auditing and control; Accounting profession history, ethics, dilemmas, challenges*

### Cybernetics and Statistics

**Cristian - Mihai DRAGOȘ**

*Applied Statistics and Econometrics*

**Dorina LAZĂR**

*Applied Statistics and Econometrics*

**Codruța MARE**

*Applied Statistics and Econometrics*

### Marketing

**Dan-Cristian DABIJA**

*Retail Marketing; Generational Marketing; Green Retailing; International Retail Marketing*

**Ioan PLĂIAȘ**

*Marketing*

**Ciprian-Marcel POP**

*Marketing*

### Finance

**Monica ACHIM**

*Business & Finance (Corporate finance, Financial Analysis, Public Finance, Fiscality)*

**Ioan BĂTRÂNCEA**

*Finance*

**Cristina CIUMAȘ**

*Finance*

**Simona - Laura DRAGOȘ**

*Insurance and pension schemes, Conventions, avoidance of double taxation, Insurance taxation*

**Simona NISTOR**

*Systemic Risk, Cross-Border Banking, Financial Networks, Banking Regulation, Financial Econometrics*

**Alexandru TODEA**

*Finance*



*In the eight PhD Programms of the PhD School within the Faculty of Economics and Business Administration candidates may write their PhD Thesis in the following languages: EN – English; FR – French; GE – German and RO – Romanian. According to the preferred PhD subject/topic, a PhD candidate should refer to one of the following PhD Supervisors:*



### Management

**Anca BORZA**

*Strategic Management, Entrepreneurship, Corporate Social Responsibility, Industrial Management*

**Emil - Lucian CRIȘAN**

*Management*

**Liviu ILIEȘ**

*Management*

**Răzvan NISTOR**

*Management*

**Levente SZÁSZ**

*Management*

**Monica - Anielă ZAHARIE**

*Management*

### Economics

**Zsolt SÁNDOR**

*General Economics*

**Monica-Ioana POP SILAGHI**

*General Economics*

#### CONTACT

Director: **Alexandru TODEA**

Email: alexandru.todea@ubbcluj.ro

Secretary of the Doctoral School:

**Moldovan Camelia Dora**

Email : camelia.moldovan@ubbcluj.ro

Web: [https://econ.ubbcluj.ro/n3.php?id\\_s=194&id\\_c=84&id\\_m=3](https://econ.ubbcluj.ro/n3.php?id_s=194&id_c=84&id_m=3)

# “Isidor Todoran” Doctoral School in Orthodox Theology



## Doctoral supervisors

**Ioan Andrei ANDREICUȚ**

*Orthodox Spirituality*

**Valer BEL**

*Missiology and Ecumenism*

**Ioan CHIRILĂ**

*The Old Testament; Biblical Archaeology; Hebrew Language*

**Gabriel GĂRDAN**

*History of Universal Church*

**Vasile GORDON**

*Homiletics and Catechetical Studies*

**Ștefan ILOAIE**

*Christian Ethics*

**Ioan Vasile LEB**

*History of Universal Church*

**Cristian - Sebastian SONEA**

*Missiology, Ecumenism, Orthodox Dogma*

**Vasile STANCIU**

*Church Music and Rite*

**Cristian TIA**

*Pastoral Theology*

**Stelian TOFANĂ**

*The New Testament*

**Nicușor TURCAN**

*Apologetics, Fundamental and dogmatic theology  
Phenomenology, History of philosophy*

**Patriciu VLAICU**

*Canon Law and Church Administration*

### CONTACT

Director: **Vasile STANCIU**

Email: [vasile.stanciu@ubbcluj.ro](mailto:vasile.stanciu@ubbcluj.ro)

Secretary of the Doctoral School:

**Mureșanu Teodora-Ilinca**

Email : [teodora.muresanu@ubbcluj.ro](mailto:teodora.muresanu@ubbcluj.ro)

Web: <http://scdoct.orth.ro>

*The Doctoral School in Theology from the Faculty of Orthodox Theology through the efforts of teachers and several doctoral students, established a precious documentation infrastructure for its students and researchers.*

*The doctoral students conduct research projects on topical issues relevant to the contemporary interconfessional and interreligious dialogue. Since 2008, in the faculty are organized every year scientific sessions with the participation of doctoral students from other faculties from the country and from abroad. The findings of these scientific meetings materialized in the publication of several volumes of studies.*





# “Ecumene” Doctoral School in Theology

## Doctoral supervisors

**Dezső BUZOGÁNY**

*Theology; Church History*

**Sándor FAZAKAS**

*Theology*

**Lehel LÉSZAI**

*Theology, Christian Theology, Biblical Studies  
Religious Education, New Testament*

**János MOLNÁR**

*Theology; Biblical, Pastoral and Didactic Theology*

**Mózes NÓDA**

*Liturgical Theology (19<sup>th</sup>-20<sup>th</sup> century Liturgical  
Movement and Reform, Conciliar and  
Postconciliar Liturgical Reform; Liturgy and Art;  
Popular Devotions);  
Church History (The Romanian / Transylvanian  
Catholic Church in the 20<sup>th</sup> Century)*

**Emilia-Corina ZAMFIR**

*Old Testament (Jeremiah, Psalms of Lament,  
Suffering, Death, Afterlife); New Testament and  
Early Christianity (Pauline Communities, Pastoral  
Epistles, Acts of Thecla, Voluntary Associations,  
Women in Early Christianity); Ecumenical  
Theology (Catholic-Protestant Ecclesiological and  
Sacramental Dialogue)*

**Gusztáv KOVÁCS**

*Social Ethics, Fundamental Ethics Clinical Ethics  
Medical Ethics, Theology, Christian Ethics*

### CONTACT

Director: **Lehel LÉSZAI**

E-mail: [lehel.leszai@ubbcluj.ro](mailto:lehel.leszai@ubbcluj.ro)

Secretary of the Doctoral School: **Biró Noémi**

Email : [noemi.biro@ubbcluj.ro](mailto:noemi.biro@ubbcluj.ro)

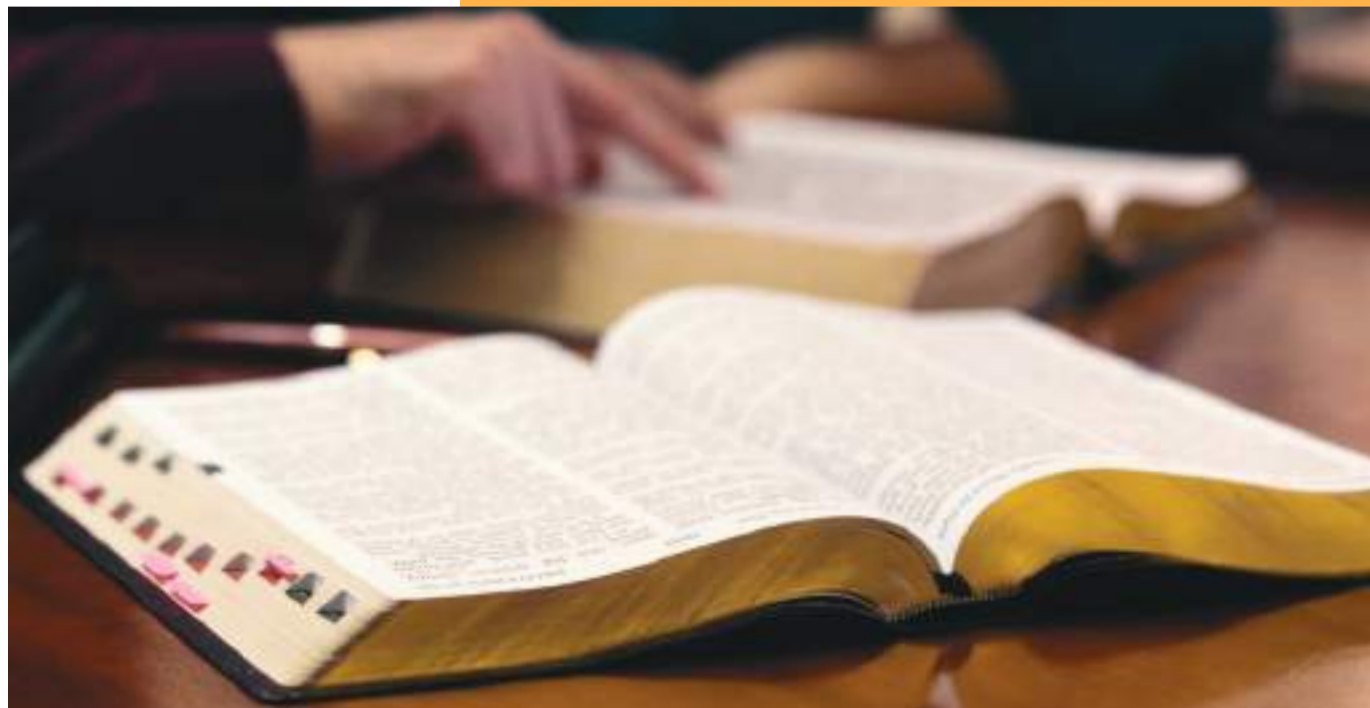
Web: [https://rt.ubbcluj.ro/en/phd-pro-gram-in-theology/](https://rt.ubbcluj.ro/en/phd-program-in-theology/)



*The doctoral studies are organized over a period of 3 academic years, and they include:*

- *A training programme based on advanced academic studies within the doctoral school and consists of activities in institutionalized formations of study;*
- *An individual programme of scientific research;*
- *Doctoral studies end with the public defence of an original paper called doctoral thesis, which is the result of the research conducted by the doctoral student.*

*Doctoral studies can be conducted in one of the following languages: Romanian, Hungarian, German and English.*



# “Religion, culture, society” Doctoral school in Roman Catholic Theology

## Doctoral supervisors

**Clara - Antonia CSISZAR**

Theology

**Dávid DIOSI**

Theology

**László HOLLÓ**

Theology

### CONTACT

Director: **Clara-Antonia CSISZAR**

Email: clara.csiszar@ubbcluj.ro

Secretary of the Doctoral School:

**Bereczki Gyöngyvér**

Email : bereczki.gyongyver@ubbcluj.ro

Web: <https://rocateo.ubbcluj.ro/>

*The name for the doctoral school - “Religion, Culture, Society” - is the result of a reflection that seeks to position future research socially and ecclesiastically, in the spirit of Vatican II, and thereby also to raise awareness of the importance of religion, culture and society in a compelling reciprocity. This paradigm of theological research is taken for granted in Western Europe, but has remained rather alien to the Catholic minority church in our country, most of whose members also belong to an ethnic minority.*

*With the new research paradigm, the mega-topics of post-conciliar theology are brought into view in such a way that the focus on the following overarching question always remains in the foreground: The role and possibilities of the concrete application of Catholic Social Teaching for a vital Church in Romania, in the Hungarian-speaking area, in East Central Europe. Indeed, the post-communist societies of East-Central Europe continue to be in transition, and the relevant question arises daily as to what role Catholic higher education and theology should play in this protracted transition process, so that the inherent values of these societies are not entirely lost in the transition.*

*In this sense, this Doctoral School pursues the overarching goal of supporting the professionalisation of the Church towards greater engagement with social and pastoral challenges of today. In doing so, Catholic Social Teaching is our central guideline, not only referring to the preferential option for the poor, but also focusing on the issues of solidarity, human dignity and the principle of subsidiarity. The necessary link between theoretical teaching and practical application is thereby realised by the fact that the research projects of the doctoral college ultimately serve to professionalise present and future leaders, who are an indispensable building block in the process of developing vital communities in which social and pastoral commitment are organically linked.*





# Doctoral School of Engineering

## Doctoral supervisors

### **Gilbert - Rainer GILLICH**

*development of non-destructive testing techniques based on the analysis of vibration signals; monitoring engineering structures in order to detect defects early and predict life expectancy; noise and vibration isolation, including those from seismic actions; advanced signal processing; development of autonomous non-destructive control systems.*

### **Zoltán - Iosif KORKA**

*vibro-acoustic diagnosis of mechanical transmissions; reliability of mechanical transmissions; computer aided design of mechanical systems; programming of numerically controlled equipment.*

### **Tiberiu - Ștefan MĂNESCU**

*Transportation Engineering, Railway Engineering, Civil Engineering*

### **Tiberiu MĂNESCU**

*Mechanical Engineering, Economic engineering in the mechanical domain,*

### **Dorian NEDELICU**

*research in the field of hydraulic machines, SolidWorks Flow Simulation, strength calculations in mechanical engineering by the finite element method (SolidWorks Simulation), computer aided design in mechanical engineering (SolidWorks, Autodesk Inventor, AutoCAD, Microstation, Rapid Prototyping, Reverse Engineering*

*The Faculty of Engineering from Babeș-Bolyai University offers the 3rd cycle of academic studies in the form of PhD programmes in the doctoral degree area Mechanical Engineering, within the Doctoral School of Engineering. Target groups are graduates of master programmes in Mechanical Engineering, Industrial Engineering, Mathematics, Computer Science, Computer Engineering and Natural Sciences.*

*The programmes are promoting high-quality fundamental and applied research in Mechanical Engineering, as well as interdisciplinary research, by involving the PhD students in the most important and recent research projects of the faculty, including international cooperation with academic and industrial partners.*

*The major research topics that are studied within the doctoral school are: Mechanics, Mechanisms and Machine Parts, Mechanical Vibration, Material Strength, Hydraulics and Hydraulic Machines, Thermotechnics and Thermal Machines.*

*The mission and objectives of the Doctoral school of Engineering are in the lines of the general mission of UBB, allowing PhD students to pursue a high-quality research, increasing the scientific quality of mentoring doctoral students and the quality of their PhD theses. The Doctoral School supports also joint doctoral degrees.*

### **Zeno - Iosif PRAISACH**

*Engineering, Applied and Computational Mathematics, Finite Element Analysis, Structural Dynamics, Design Engineering, Finite Element Modeling, Structural Analysis, Stress Analysis, Solid Mechanics, Mechanics of Materials, Pattern Recognition*

### **CONTACT**

Director: **Zoltan – Iosif KORKA**  
Email: zoltan.korka@ubbcluj.ro

Secretary of the Doctoral School:  
**Chira Mihaela Tatiana**  
Email : mihaela.chira@ubbcluj.ro  
Web: [https://eng.ubbcluj.ro/?page\\_id=405](https://eng.ubbcluj.ro/?page_id=405)





UNIVERSITATEA BABEŞ-BOLYAI  
BABEŞ-BOLYAI TUDOMÁNYEGYETEM  
BABEŞ-BOLYAI UNIVERSITÄT  
BABEŞ-BOLYAI UNIVERSITY

---

TRADITIO ET EXCELLENTIA